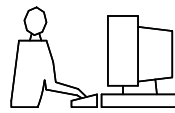
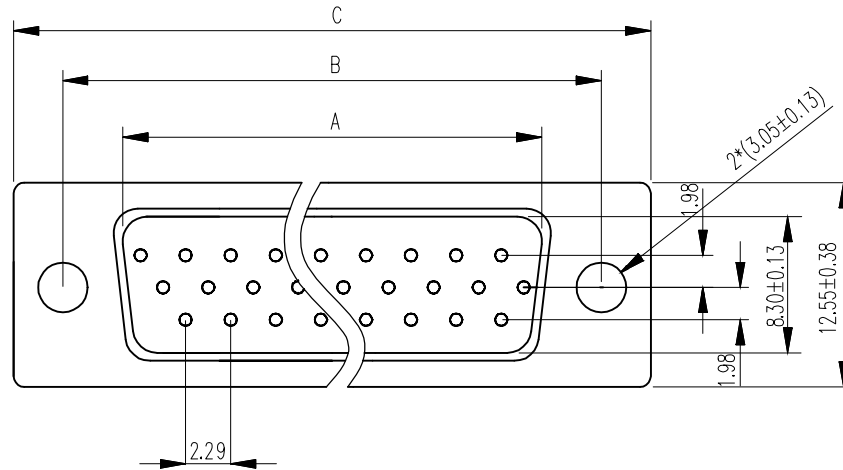


THIS IS A C.A.D. GENERATED DRAWING
DO NOT MAKE MANUAL REVISIONS TO MASTER.



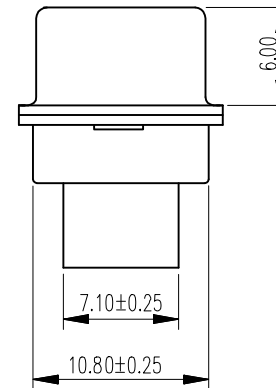
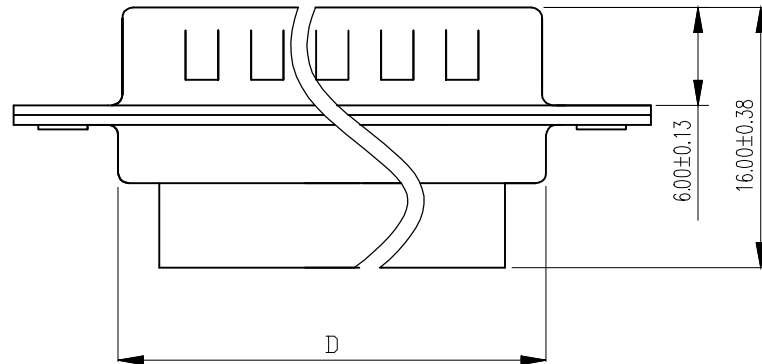
* UNLESS OTHERWISE SPECIFIED TOLERANCES
ON DECIMAL IS: ANGLE X.' ±2'
UNIT: MM X.X' ±0.05'
X.X ±0.38
X.XX ±0.25
X.XXX ±0.13



Ordering Info	Dimensions(mm)				
Part Number	SIZE	A±0.25	B±0.13	C±0.38	D±0.25
MHHDBC15-SP	15	16.92	24.99	30.81	19.28
MHHDBC26-SP	26	25.25	33.32	39.14	27.51
MHHDBC44-SP	44	38.96	47.04	53.04	41.28
MHHDBC62-SP	62	55.42	63.50	69.32	57.71

Order Codes:

Plug Connector		
15	2101-0390-01	MHHDBC15-SP
26	2101-0390-02	MHHDBC26-SP
44	2101-0390-03	MHHDBC44-SP
62	2101-0390-04	MHHDBC62-SP



1. MATERIALS AND FINISH

- 1.1 SHELL: STEEL MATERIAL, FRONT TIN FINISHED
BACK SHELL TIN FINISHED.
1.2 INSULATOR: PBT THERMOPLASTIC, 30% GLASS
FILLED, UL 94V-0 RATED, BLACK COLOR.

THESE DRAWINGS AND SPECIFICATIONS ARE THE
PROPERTY OF MH CONNECTORS LTD. AND SHALL NOT
BE REPRODUCED, COPIED OR USED AS THE BASIS FOR
THE MANUFACTURE OR SALE OF APPARATUS WITHOUT
WRITTEN PERMISSION.

DRAWN HALEY	DATE 11-14-13
----------------	------------------

APPROVED	DATE
----------	------

SCALE	SHEET OF 1 OF 1	REV: 4.0
-------	--------------------	-------------

DRAWING No MHHDBCXX-SP



THIS SERIES FULLY CONFORMS TO THE
EUROPEAN UNION DIRECTIVES 2002/95/EC
AND 2002/96/EC FOR RoHS COMPLIANCY.



MH CONNECTORS LTD.