

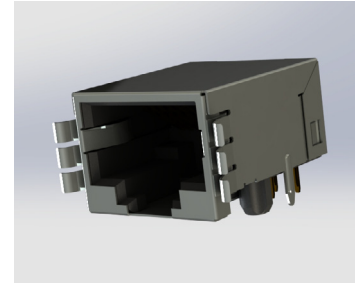
J9Q SERIES



MODULAR JACK CONNECTORS: SINGLE PORT RJ45, TAB DOWN RIGHT ANGLE
PCB MOUNT, SHIELDED WITH 'REVERSED' EMI, 6.35mm FOOTPRINT

Features:

- Top performance for high speed networking, voice and data applications
- Meet FCC PART 68, Subpart F requirements
- Advanced EMI/RFI protection with grounding options (PCB or panel)
- Applications: Telecommunications, Broadcast, Data Products
- RoHS Compliant



Specifications:

Insulator Material	PBT or Nylon
Contact Material	Phosphor Bronze
Contact Plating	Gold Plating on contact area and Tin Plating on tails with Nickel underplating all over
Current Rating	1.5 amps @25°C
Voltage Rating	125 V AC
Contact Resistance	20 milliohms maximum
Dielectric Withstanding Voltage	1000 V AC
Insulation Resistance	500 megaohms minimum
Durability	750 cycles minimum
Operating Temperature	-40°C to +85°C
Wave Soldering Process	260°C ± 5°C, 5~10 Seconds

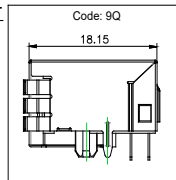
Ordering Code:

EXAMPLE PART NUMBER: **J9Q018822P00202**

SERIES: _____
RJ MODULAR JACK

HOUSING TYPE: _____

9Q-



NO. OF PORTS: _____
01 - 1 PORT

NO. OF CONTACTS PER PORT: _____
88 - 8P8C

CONTACT PLATING: _____
2 - GOLD FLASH
3 - 15 MICROINCHES OF GOLD
6 - 30 MICROINCHES OF GOLD
9 - 50 MICROINCHES OF GOLD

CONTACT TAIL TYPE: _____
2 - RIGHT ANGLE PCB

HOUSING MATERIAL: _____
P - PBT
N - NYLON

MOUNTING OPTIONS:

2 - PEGS

PORT TYPE:

0 - SINGLE ROW (TAB DOWN)

SHIELDING:

2- METAL SHIELD WITH EMI

RIGHT LED COLOR:

0 - NO LED

LEFT LED COLOR:

0 - NO LED