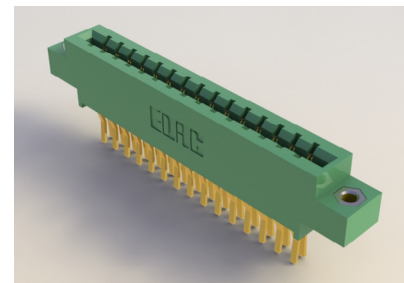


Card Edge Connectors 0.156" (3.96mm) Pitch

Features:

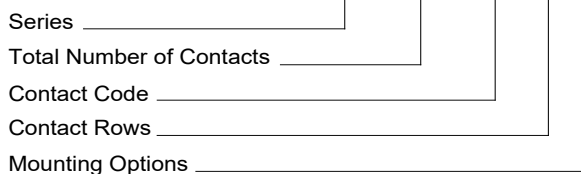
- 0.156" (3.96mm) contact spacing x 0.188" (4.78mm) row spacing
- Accepts 0.062" (1.57mm) nominal thickness P.C. board
- High profile insulator body, 0.720" (18.29mm)
- 0.062"(1.57mm) x 0.031"(0.79mm) wire wrap contact termination
- Single or dual row configurations
- Variety of mounting options
- Accepts between contact and in-contact polarizing keys
- RoHS Compliant



Specifications:

Insulator Material	DAP (Diallyl Phthalate), UL 94V-0 , Green Color
Contact Material	Copper Alloy
Contact Plating	Gold Plating on mating area and Tin Plating on tails with Nickel underplating all over
Current Rating	5 amps
Contact Resistance	10 milliohms maximum
Dielectric Withstanding Voltage	1800 V AC rms at sea level between adjacent contacts
Insulation Resistance	5000 megaohms minimum
Operating Temperature	-65°C to +125°C
Insertion Force	16 oz (4.45 N) maximum per contact pair when tested with .070" (1.78mm) thick gauge
Withdrawal Force	1 oz (0.28 N) minimum per contact pair when tested with .054" (1.37mm) thick gauge

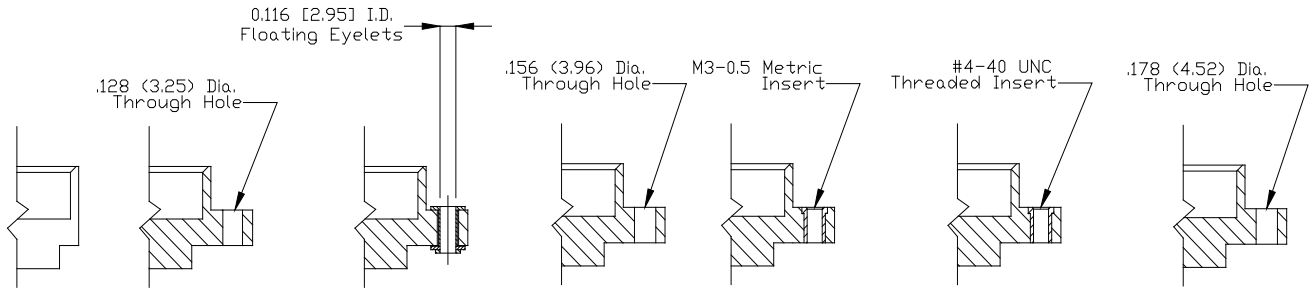
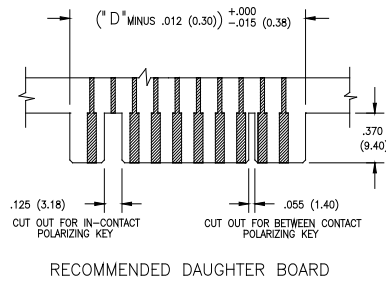
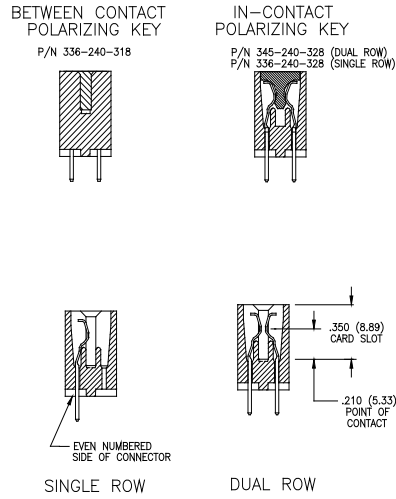
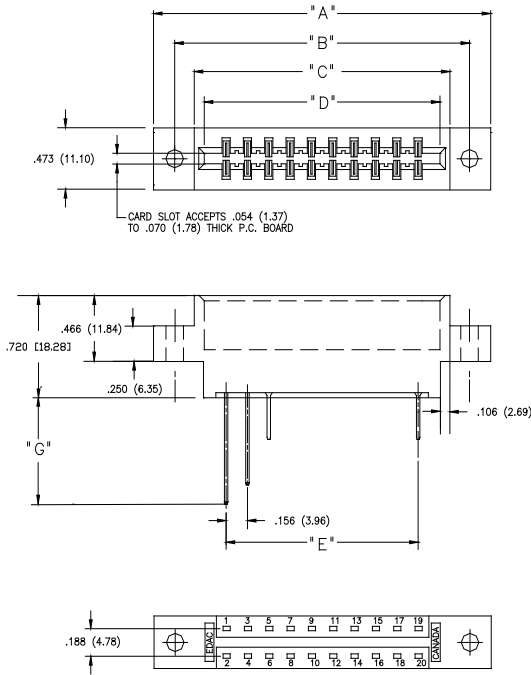
Example Part Number: **336-072-541-809**



Series:			
336			
Total Number of Contacts:	Contact Rows:		
006, 007, 043	Single Row		
012, 014, 086	Dual Row		
Contact Code:	Tail Description:	Tail Size:	Tail Length "G":
541	Wire Wrap	.062"(1.57mm) x.031"(0.79mm)	.750 (19.05)
Contact Rows:	Description:		
6	Single Row		
8	Dual Row		
Mounting Options:	Description:		
01	No Mounting Lug		
02	Ø.128" (Ø3.25mm) Mounting Holes		
03	Ø.116" (Ø2.95mm) I.D. Floating Eyelets		
04	Ø.156" (Ø3.96mm) Mounting Holes		
07	M3-0.5 Metric Threaded Inserts		
08	#4-40 Unified Threaded Inserts		
09	Ø.178" (Ø4.52mm) Dia. Mounting Holes		

Ordering Code Notes:
 1) All connector sizes up to 43 contacts single row / 86 contacts dual row are available upon request.
 2) For details of the mounting options refer to next page.

Card Edge Connectors 0.156" (3.96mm) Pitch



Code x01 Code x02

Code x03

Code x04

Code x07

Code x08

Code x09

NUMBER OF CONTACTS		"A"		"B"		"C"		"D"		"E"	
Single	Double	Inch	mm	Inch	mm	Inch	mm	Inch	mm	Inch	mm
6	12	1.857	47.17	1.534	38.96	1.216	30.89	1.100	27.94	0.780	19.81
10	20	2.481	63.02	2.158	54.81	1.840	46.73	1.724	43.79	1.404	35.66
15	30	3.261	82.83	2.938	74.63	2.620	66.55	2.504	63.60	2.184	55.47
18	36	3.729	94.72	3.729	94.72	3.088	78.44	2.972	75.49	2.652	67.36
22	44	4.353	110.57	4.030	102.36	3.712	94.28	3.596	91.34	3.276	83.21
25	50	4.821	122.45	4.498	114.25	4.180	106.17	4.064	103.23	3.744	95.10
28	56	5.289	134.34	4.966	126.14	4.648	118.06	4.532	115.11	4.212	106.98
36	72	6.537	166.04	6.214	157.84	5.896	149.76	5.780	146.81	5.460	138.68
43	86	7.629	193.78	7.306	185.57	6.988	177.50	6.872	174.55	6.552	166.42