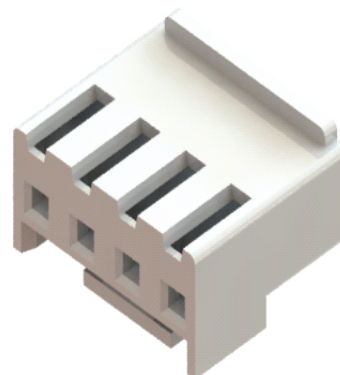


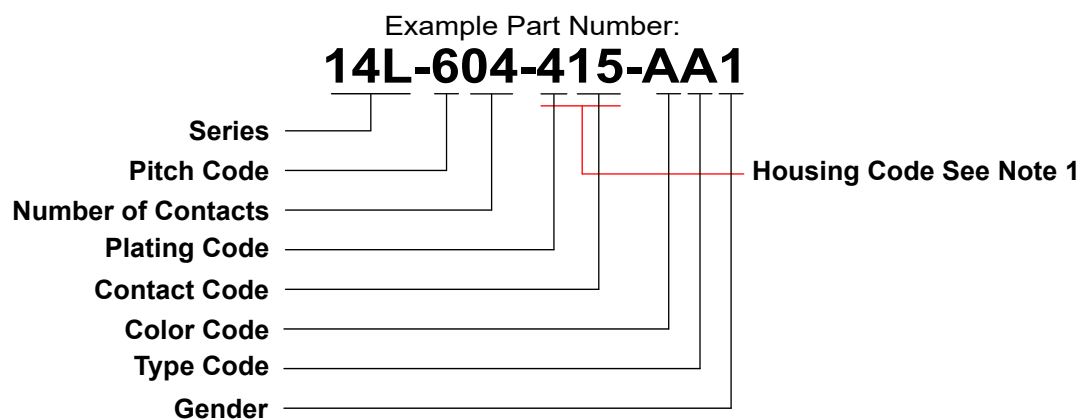
Features

- .156" (3.96mm) contact spacing
- For use with PCB board of .062" (1.6mm) nominal thickness
- Low Profile Insulator Body, .126" (3.2mm) Width .343" (8.7mm) Height
- Top entry or side entry configuration
- RoHS 2 Compliant



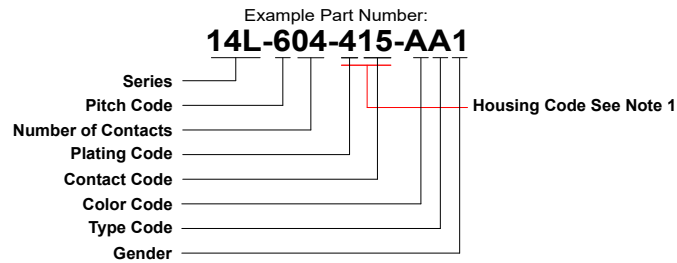
Specifications

| | | |
|---------------------------------|---|----------------------------------|
| Insulator Material | UL 94V-0 Thermoplastic PA66, Natural colour | |
| Contact Material | Brass (Pin header) | Phosphor Bronze (Socket Contact) |
| Contact Plating | Tin Plating or Gold Flash | |
| Current Rating | 7 amps | |
| Contact Resistance | 10 Milliohms maximum | |
| Dielectric Withstanding Voltage | 1500 VAC/minute | |
| Insulation Resistance | 1,000 Megaohms minimum | |
| Operating Temperature | -25°C to +85°C | |
| Applicable Wire | AWG 22-18 | |



*** Please see next page for options

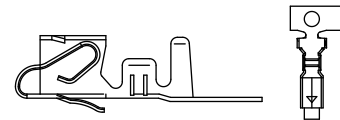
Wire to Board Connectors .156" (3.96 mm) Pitch



| Series | Description |
|--|---|
| 14L | Wire-to-Board |
| Pitch Code | Description |
| 6 | .156" (3.96mm) |
| Number of Contacts | |
| 02, 03, 04, 05, 06, 07, 08, 09, 10, 11, 12, 13, 14, 15 | |
| Pin Headers Plating Code | Description |
| 2 | Gold Flash |
| 4 | Tin Plated |
| Pin Headers Contact Code | Description |
| 15 | Top Entry, Through Hole |
| 16 | Side Entry, Through Hole |
| Housing Ordering Code | Description |
| 210 | Standard (Note 1: When a socket is selected, it replaces the "Plating Code" and "Contact Code". See the "Socket Contacts" table below for contact options) |
| Color Code | Description |
| A | Natural |
| Type Code | Description |
| A | Standard |
| Gender | Description |
| 1 | Pin Header |
| 2 | Socket (for housing only) |

Socket Contact Ordering Code

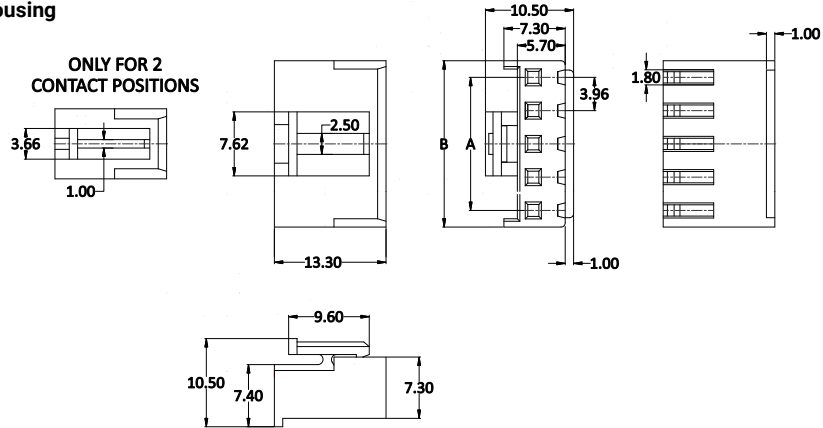
| Part Number | Wire Gauge | Description |
|-------------|------------|-------------|
| 14L-292-482 | 22-18 AWG | Tin Plated |
| 14L-292-282 | 22-18 AWG | Gold Flash |



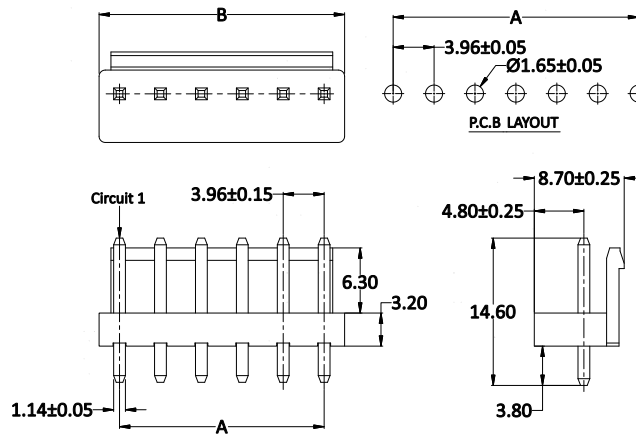
Dimension Table

| No. of Contacts | A | B | No. of Contacts | A | B |
|-----------------|-------|-------|-----------------|-------|-------|
| 2 | 3.96 | 7.92 | 9 | 31.68 | 35.64 |
| 3 | 7.92 | 11.88 | 10 | 35.64 | 39.60 |
| 4 | 11.88 | 15.84 | 11 | 39.60 | 43.56 |
| 5 | 15.84 | 19.80 | 12 | 43.56 | 47.52 |
| 6 | 19.80 | 23.76 | 13 | 47.52 | 51.48 |
| 7 | 23.76 | 27.72 | 14 | 51.48 | 55.44 |
| 8 | 27.72 | 31.68 | 15 | 55.44 | 59.40 |

Socket Housing



Through Hole Type Headers Top Entry Header



Side Entry Header

