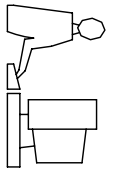
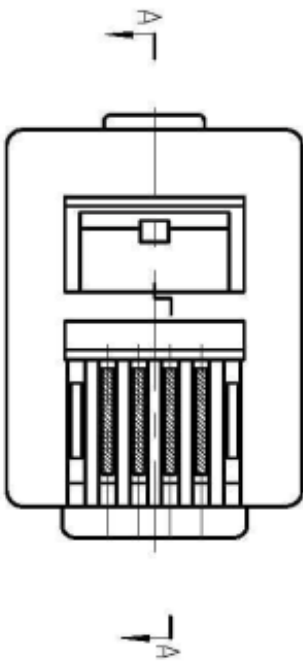


THIS IS A C.A.D. GENERATED DRAWING
DO NOT MAKE MANUAL REVISIONS TO MASTER.

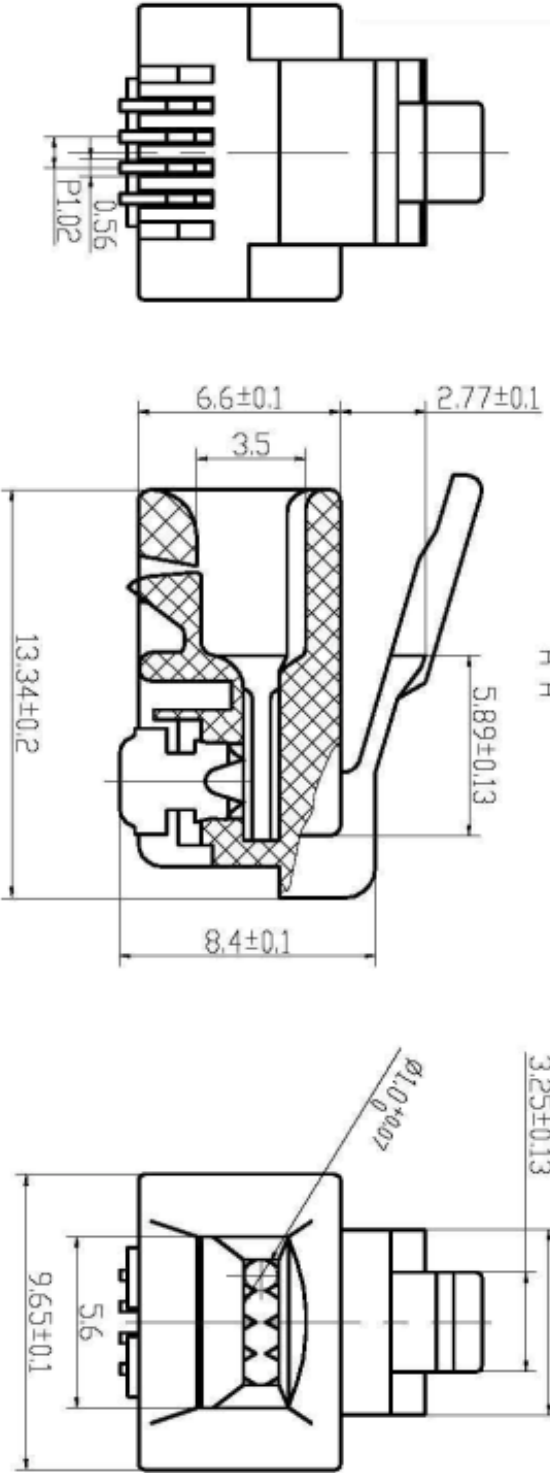


* UNLESS OTHERWISE SPECIFIED TOLERANCES
ON DECIMAL IS: ANGLE $\pm 1^\circ$
.XX ± 0.35
UNIT: MM



Electrical:
Contact current rating: 1.5AMPS
Dielectric withstanding voltage: 500VAC
Insulation resistance: 1000 MegOhms Min.
Contact resistance: 30 MilliOhms Max
Operating temperature: -55 °C to +85 °C

Materials:
Contacts: Copper alloy
Insulator: Thermoplastic PA9T UL 94V-0
Shell: Steel
Gold plating: 50 microinch



THIS SERIES FULLY CONFORMS TO THE
EUROPEAN UNION DIRECTIVES 2002/95/EC
AND 2002/96/EC FOR ROHS COMPLIANCY.



THESE DRAWINGS AND SPECIFICATIONS ARE THE
PROPERTY OF MH CONNECTORS LTD. AND SHALL NOT
BE REPRODUCED, COPIED OR USED AS THE BASIS FOR
THE MANUFACTURE OR SALE OF APPARATUS WITHOUT
WRITTEN PERMISSION.

DRAWN	JDHNNY	DATE	08--16-12
APPROVED		DATE	
SCALE	1:1	SHEET OF	1 DF 1
DRAWING No	MHRJ116P4CR	REV:	A

MH CONNECTORS LTD.