

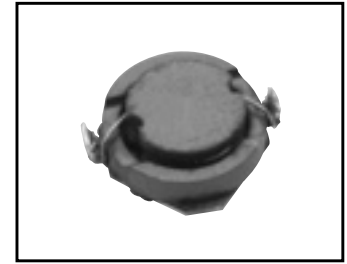
SMALL FOOT PRINT AND LOW PROFILE POWER INDUCTORS [CXFU0210 Series]

Features

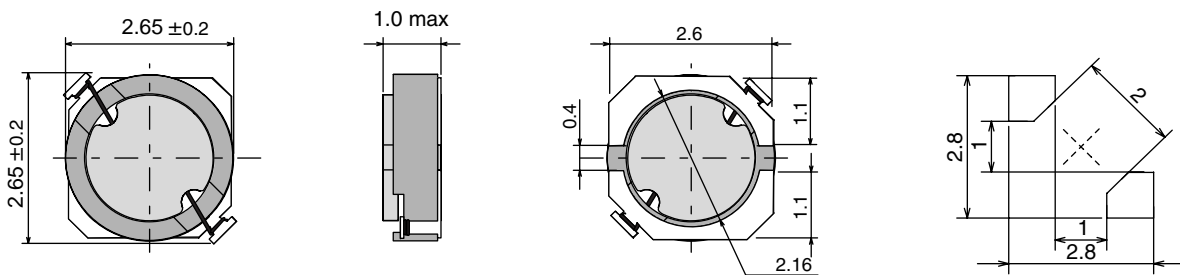
- Shielded power inductors with 1.0mm(Max) height, low DC-R and low AC-R
2.65 × 2.65(Typ) × 1.0(max)mm
- Low noise and flux by closed magnetic path structure
- RoHS Compliant

Applications

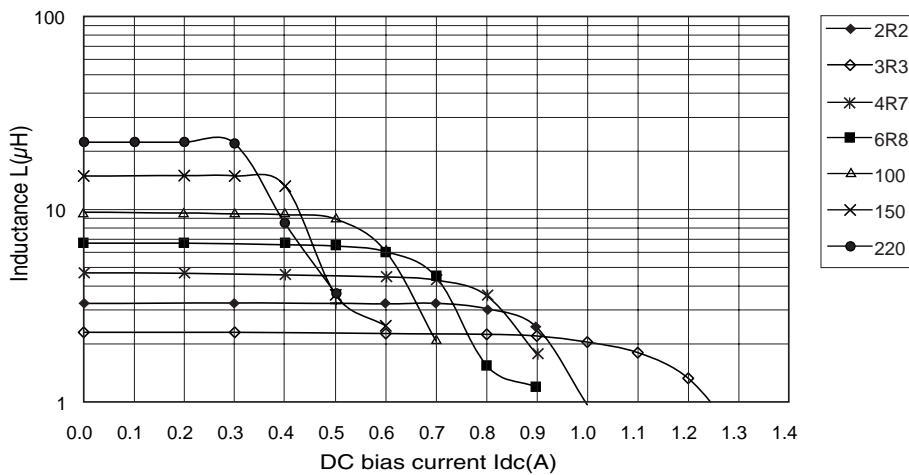
- DC-DC converters for
- Cellular phones, PDAs, Digital still cameras
- Digital video cameras, and others



Dimensions/Land pattern(for ref.)<mm>



Inductance vs. DC bias current



Part number list · Specifications

(Typical)

Series	Part number	Inductance L (μH) (1)	DC resistance Rdc(Ω) (2)	Rated current Idc1 / Idc2(A) (3)	Operating temperature range Ta () (4)
CXFU0210	CXFU0210-2R4	2.4±20%	0.140	1(max)/0.95	-25~100
	CXFU0210-3R3	3.3±20%	0.220	0.8(max)/0.75	
	CXFU0210-4R7	4.7±20%	0.260	0.7(max)/0.7	
	CXFU0210-6R8	6.8±20%	0.350	0.6(max)/0.6	
	CXFU0210-100	10±20%	0.540	0.5(max)/0.5	
	CXFU0210-150	15±20%	0.875	0.4(max)/0.35	
	CXFU0210-220	22±20%	1.250	0.3(max)/0.3	

Note : (1)Ta=25、Idc=0mA (2)Ta=25 (3)Idc1:Temperature rise T 40、Idc2:Inductance change ratio | L/LI 30% (4)Including temperature rise Custom specifications are available.