

### FEATURES

- 0.156" (3.96mm) Contact Spacing by 0.200" (5.08mm) Row Spacing
- Accepts .062" (1.57mm) Nominal Thickness P.C. Board
- Low Profile Insulator Body, 0.460" (11.68mm)
- Contact Termination Options include P.C. Tail, Wire Hole, Wire Wrap, 90° and Extender Board Bends
- Single or Dual Row Configurations
- Large Variety of Mounting Options
- Accepts between Contact and In-Contact Polarizing Keys
- Pre-assembled Card Guides are available
- RoHS Compliant UL Recognized

### Specifications:

Insulator Material	UL 94V-0 Thermoplastic Polyester
Contact Material	Copper Alloy
Contact Plating	Gold Plating on mating area and Tin Plating on tails with Nickel underplating all over
Current Rating	5A Continuous
Contact Resistance	10 milliohms maximum
Withstand Voltage	1800VAC rms at sea level between adjacent contacts
Insulation Resistance	5000 Megohms minimum
Operating Temperature	Operating Temperature: -40°C to +105°C
Insertion Force	16oz (4.45N) maximum per contact pair when tested with .070" (1.78mm) thick gauge
Withdrawal Force	1oz (0.28N) minimum per contact pair when tested with .054" (1.37mm) thick gauge

Example Part Number **307-044-520-202**



Contact Code	Description & Tail Size	Tail Length "G"
<i>Single Row Contacts - Read One Side of Daughter Board</i>		
505	Wire Hole .087 x .013 (2.21 x 0.33)	.282 (7.16)
525	P.C. Tail .046 x .013 (1.17 x 0.33)	.213 (5.41)
527	P.C. Tail .046 x .013 (1.17 x 0.33)	.358 (9.09)
531	P.C. Tail .023 x .013 (0.58 x 0.33)	.213 (5.41)
545	Wire Wrap .046 x .013 (1.17 x 0.33)	.708 (17.98)
547	Wire Wrap .046 x .013 (1.17 x 0.33)	.520 (13.21)
558	90 DEGREE BEND (CODE 545 CONTACTS)	
559	90 DEGREE BEND (CODE 527 CONTACTS)	
<i>Single Row Contacts - Read Both Sides of Daughter Board</i>		
501	Wire Hole .089 x .014 (2.29 x 0.36)	.213 (5.41)
521	P.C. Tail .046 x .014 (1.17 x 0.36)	.213 (5.41)
541	Wire Wrap .046 x .014 (1.17 x 0.36)	.495 (12.57)
553	90 DEGREE BEND (CODE 521 CONTACTS)	
554	90 DEGREE BEND (CODE 501 CONTACTS)	
557	90 DEGREE BEND (CODE 541 CONTACTS)	
<i>Dual Row Contacts - Read Both Sides of Daughter Board</i>		
500	Wire Hole .087 x .013 (2.21 x 0.33)	.282 (7.16)
520	P.C. Tail .046 x .013 (1.17 x 0.33)	.213 (5.41)
522	P.C. Tail .046 x .013 (1.17 x 0.33)	.358 (9.09)
524	P.C. Tail .023 x .013 (0.58 x 0.33)	.213 (5.41)
540	Wire Wrap .046 x .013 (1.17 x 0.33)	.708 (17.98)
542	Wire Wrap .046 x .013 (1.17 x 0.33)	.520 (13.21)
555	.062 EXTENDER BOARD BEND (CODE 500 CONTACTS)	
556	.062 EXTENDER BOARD BEND (CODE 520 CONTACTS)	
558	90 DEGREE BEND (CODE 522 AND 540 CONTACTS)	
559	90 DEGREE BEND (CODE 522 AND 540 CONTACTS)	
560	.062 EXTENDER BOARD BEND (CODE 522 CONTACTS)	

### Ordering Code Notes:

- 1) All connector sizes up to 44 contacts single row / 88 contacts dual row are available upon request.
- 2) For contacts with overall tin plating, change the first digit of the contact code from 5 to 4
- 3) For details of the extender board and 90 degree bends refer to next pages.
- 4) For details of the mounting options refer to next pages.

### Series:

Series	Insulator Color
307	Thermoplastic Polyester, Green
357	Thermoplastic Polyester, Black

### Total Number of Contacts:

006, 007, . . . . 044  
012, 014, . . . . 088

### Contact Rows

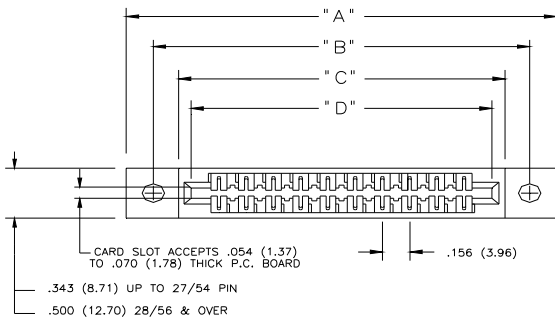
Single Row  
Dual Row

### Contact Rows:

Contact Rows	Description
1	Single Row (Single Readout Flush Mounting Lugs)
2	Dual Row (Dual Readout Flush Mounting Lugs)

### Mounting Options:

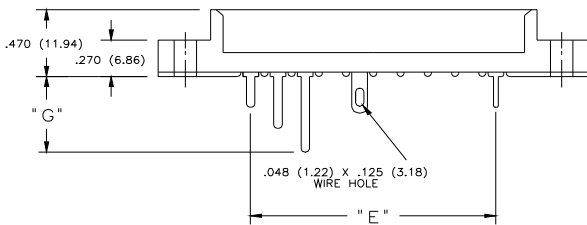
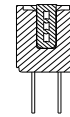
Mounting Options	Description
01	No Mounting Lug
02	Ø.128" (Ø3.25mm) Mounting Holes
03	Ø.116" (Ø2.95mm) I.D. Floating Eyelets
04	Ø.156" (Ø3.96mm) Mounting Holes
07	M3-0.5 Metric Threaded Inserts
08	#4-40 Unified Threaded Inserts
12	Ø.128" (Ø3.25mm) Side Mounting Holes
58	.468" (11.89mm) Offset Card Guides
68	.344" (8.74mm) Offset Card Guides
78	In-Line Card Guides



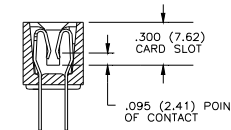
IN-CONTACT POLARIZING KEY  
P/N 307-240-328



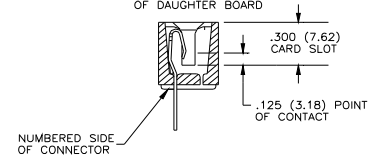
BETWEEN CONTACT POLARIZING KEY  
P/N 306-240-318



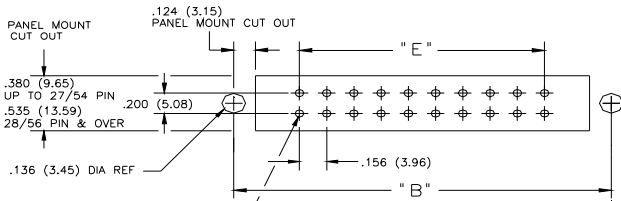
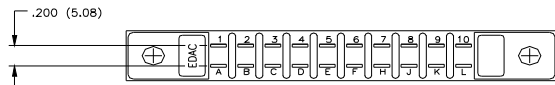
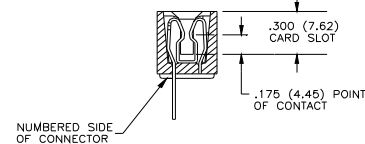
DUAL ROW CONTACTS



SINGLE ROW CONTACTS  
READ ONE SIDE OF DAUGHTER BOARD

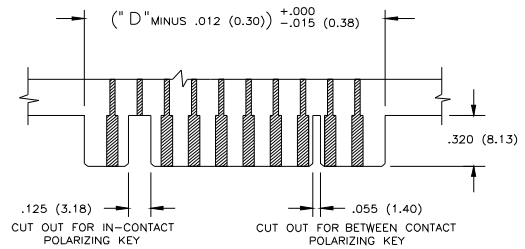


SINGLE ROW CONTACTS  
READ BOTH SIDES OF DAUGHTER BOARD



Ø.050 (1.27) DIA +.004 (0.10)/-.000  
HOLE PATTERN FOR ALL P.C. TAILS  
EXCEPT CODES 524 & 531  
.031 (0.79) +.004 (0.10)/-.000  
FOR CODE 524 & 531 TAILS  
Ø.008 (0.20) DIA

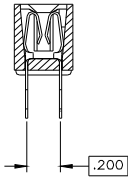
CONNECTOR MOUNTING PATTERN



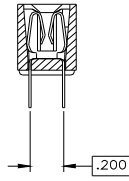
RECOMMENDED DAUGHTER BOARD

NUMBER OF CONTACTS		"A"		"B"		"C"		"D"		"E"	
Single	Double	Inch	mm	Inch	mm	Inch	mm	Inch	mm	Inch	mm
6	12	1.842	46.79	1.532	38.91	1.246	31.65	1.100	27.94	0.780	19.81
8	16	2.466	62.64	2.156	54.76	1.870	47.50	1.724	43.79	1.404	35.66
10	20	2.778	70.56	2.468	62.69	2.182	55.42	2.036	51.71	1.716	43.59
12	24	3.246	82.45	2.936	74.57	2.650	67.31	2.504	63.60	2.184	55.47
15	30	3.714	94.34	3.404	86.46	3.118	79.20	2.972	75.49	2.652	67.36
18	36	4.338	110.19	4.028	102.31	3.742	95.05	3.596	91.34	3.276	83.21
20	40	4.806	122.07	4.496	114.20	4.210	106.93	4.064	103.23	3.744	95.10
22	44	4.962	126.03	4.652	118.16	4.366	110.90	4.220	107.19	3.900	99.06
25	50	5.278	134.06	4.964	126.09	4.678	118.82	4.532	115.11	4.212	106.98
28	56	5.742	145.85	5.432	137.97	5.146	130.71	5.000	127.00	4.680	118.87
30	60	6.054	153.77	5.744	145.90	5.458	138.63	5.312	134.92	4.992	126.80
36	72	6.522	165.66	6.212	157.78	5.926	150.52	5.780	146.81	5.460	138.68
43	86	7.614	193.40	7.304	185.52	7.018	178.26	6.872	174.55	6.552	166.42
44	88	7.77	197.36	7.46	189.48	7.717	196.02	7.028	178.51	6.708	170.38

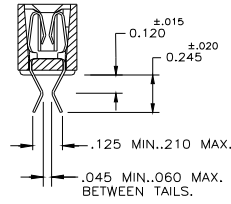
CONTACT CODE 500



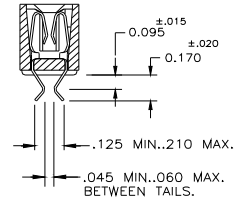
CONTACT CODE 520



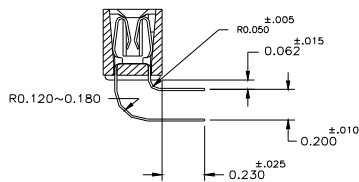
CONTACT CODE 555



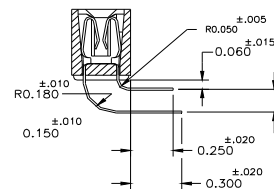
CONTACT CODE 556



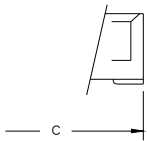
CONTACT CODE 558



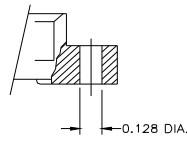
CONTACT CODE 559



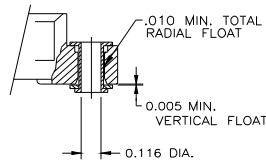
VARIATION 01  
NO MOUNTING LUG



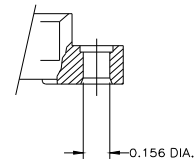
VARIATION 02  
.128 ±.003 DIA. MOUNTING HOLE



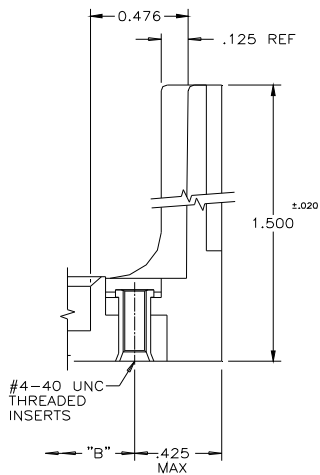
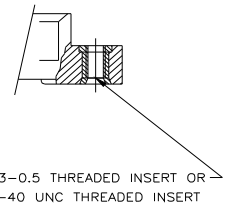
VARIATION 03  
.116 ±.003 I.D. FLOATING EYELET



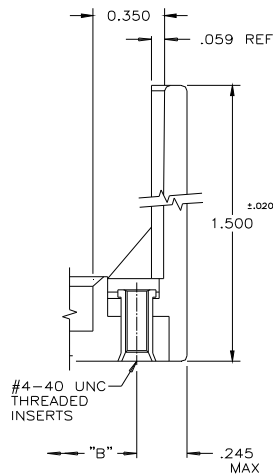
VARIATION 04  
.156 ±.002 DIA. MOUNTING HOLE



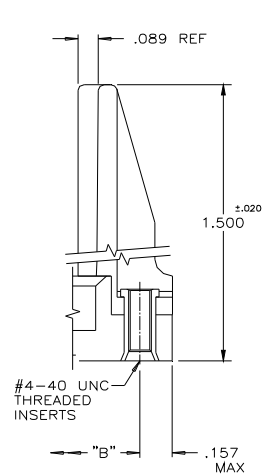
VARIATIONS 07 AND 08  
THREADED INSERT



MOUNTING OPTION CODE #58



MOUNTING OPTION CODE #68



MOUNTING OPTION CODE #78