

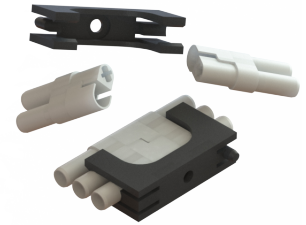
# 520 SERIES

## Hermaphroditic Connectors



### Features:

- Utilizes EDAC gold-plated, hermaphroditic, contacts producing ultra-reliable connection with four gas-tight mating surfaces: A top quality, yet highly cost-effective, interconnect product
- Board mount or in-line contact tail options
- Identical insulator for plug and receptacle enabling one part number to be ordered/stocked
- 2 or 3 way options available
- Retention clip available to neatly secure the mated connector to the panel when in-line is used



### Specifications:

Housing Material	Glass-filled thermoplastic
Contact Material	Phosphor bronze alloy
Contact Plating	Gold Plating over Nickel over entire contact
Current Rating	8.5 Amperes
Contact Resistance	10 milliohms max.
Insulation Resistance	5,000 megohms min.
Dielectric Withstanding Voltage	2,500 volts R.M.S. sea level

Part Numbers:	Description:
520-210-002	2 Circuit Housing
520-210-003	3 Circuit Housing
520-220-001	Retention Clip

#### Ordering Code Notes:

1) Contacts may be ordered separately

Part Number	Description	Silhouette
516-290-500	Wire Hole	
516-290-520	P.C. Tail	
516-290-542	Wire Wrap	
516-290-590	Crimp (Loose)	
516-294-571	Crimp - 1800 Contact Per Reel	

2) For housing supplied with contacts assembled or housing with cable tails crimped and assembled, please contact EDAC.

